

Clear Lake Trowel & Trellis Garden Club



Clear Lake Trowel & Trellis Garden Club (CLTTGC) is a member of Mendo-Lake District Garden Clubs, California Garden Clubs Inc (CGCI) and the National Garden Clubs Inc (NGCI). We were founded on September 21, 1955, by five women who wished to create and promote interest in amateur gardening in Lake County.

December 2011
Vol. 1, Issue 4



Officers:

President:

Helen Turley

Vice President:

Linda Waterstraat

Treasurer:

Ginny Cline

Secretary:

Jo Douville

Parliamentarian:

Jo Shaul

www.clttgc.org
Visit us on Facebook



Keep poinsettias in a sunny warm location. Feed monthly and soak the soil when you water.

Master Gardener

Thyme with President Helen

What would the holiday season be without greenery and flowers? Even though we don't usually think of the winter holidays as a time for flowers, some have very much become a part of our winter holiday traditions.

MISTLETOE—kissing under the Mistletoe is a custom dating back at least to the early 17th century. The man is supposed to pluck a berry when he kisses a woman under the mistletoe and when all the berries are gone, no more kissing takes place.

HOLLY—The European holly plant is where the tradition of using green and red colors for Christmas came from. The custom of decorating with holly is believed to go back to the Roman Festivals of Saturnalia, a precursor to Christmas.

CHRISTMAS TREES—the decorating of Christmas trees also goes back to Roman times and was introduced into England from Germany soon after Queen Victoria's marriage to Prince Albert.

POINSETTIA—there is a Mexican legend that a young girl walking to Christmas mass was upset because she had no appropriate offering. She was told that even a humble gift was acceptable if given with the proper spirit so she picked some "weeds" from the side of the road. When she took them into the church, they burst into color—a Christmas miracle.

AMARYLLIS—we think of this flower by this common name but it is actually a hippeastrum. An Amaryllis is a related flower native to Africa. White amaryllises are used as part of a traditional Swedish Christmas.

WREATHS—putting plants into the symbolic circular shape symbolizes the strength of life overcoming the forces of winter. Wreaths and other decorations during long winters often consisted of whatever natural materials looked attractive at this bleak time of year.

NARCISSUS (PAPER WHITES)—this is the first year I have actually started forcing my favorite flower for the holidays. I received five big, beautiful bulbs as a hostess gift (Isn't that a great idea) from a friend, and I am so excited about watching them grow. I found the perfect container and decorative rocks and the bulbs are very happily sprouting in my sunroom. Now I just have to keep my cats from drinking the water or remember to keep filling it. The latter plan will probably work best!!!

As you can see, over the centuries people have used evergreens, hollies, berries, and forced blossoms to hold on to the promise of spring. As we "Deck Our Halls" with boughs of holly or whatever flowers or greenery we choose this season, my wish for everyone throughout the world is a heart filled with **"Peace on Earth, Good Will To Men"**. **Happy Holidays to my Garden Club family.**



THANKSGIVING IS FOR THE BIRDS: Jerry Shaul

Josephine, I'm so proud of you for setting places at our Thanksgiving dinner for a multitude of guests at such short notice. Speaking for our fine feathered friends, I'd like to thank you for your selection of beak watering foods right down to the crow grinding pebbles. What a pleasure it was to watch, close up, each of these beautiful creatures getting along--except Mr. Scrub jay who is always pushy at the table and at his worst is a nest robber. He gobbles up cracked corn and makes unripe fruit inedible. Many of these blue devils have perished from lead poisoning in our yard--but this is Thanksgiving. Mrs. Oriole and Grosbeak flew in silently dressed in their best gold and black coats. Their favorites are grapes and figs--shy and



flighty as always. The tiny Gold Finch and Tufted Titmouse girls were shy and well behaved. Miss Titmouse took one seed at a time, left the table, removed the seed hull before eating and nervously returned. The Brown Towhee and his beautiful cousin, the Rufus sided Towhee were on a diet of seeds. As usual they were calm, cool and col-

lected. Mr. and Mrs. Mourning Dove while eating their fill of cracked corn and seeds took no guff from pushy Mr. Jay.

Josephine's favorite, the California Quail, were well represented by Mr. and Mrs. and family. Additional space had to be provided to accommodate the entire covey. As more food was provided (Purina scratch grains 50 lbs/ \$11.00) the dominant male stood guard to alert his covey of danger.

Josephine, we not only need to give thanks to these beautiful creatures for enhancing the beauty of our landscape--but for their contribution to the civilized world. Where would air travel be without the early study of birds in flight? Give thanks to all the messenger pigeons that made the ultimate sacrifice. Studies of their uncanny ability to navigate long distances during migration have sparked man's own interest in like endeavors; development of vaccines using embryos of the Gallus gallus; and last but not least their contribution to feeding mankind.

Josephine, please remove the roasted bird from our table---the guests are getting nervous.



SUNSHINE LADY Marva Brandt

Thinking of You

- ♥ Thelma Dangel
- ♥ Carmen Carpenter

Thelma Dangel has moved to an assistant living home near her family. Call 1-925 296-0508 or write her at 2175 Ygnacio Valley Road, Walnut Creek, Ca 94598

Lake Ka-Ba-Tin Redbud Flower Arrangers— Stretch Design

Christmas Luncheon:

Zino's Ristorante on Soda Bay Rd, Kelseyville.

December 15th (Thursday) at noon.

The cost is \$18+tip.

Menu:

Chicken Alfredo w/sm salad or Shrimp Salad.

Call Betty Atwood-Rayna to sign up.



CGCI President's Project:

Kenneth M Stocking Native Plant Garden
at Sonoma State University

Julie West's Project for her 2011-2013

term will continue her devotion to this garden resource-focusing on educating the community in value and use of California native plants. The Goal: Three additional interpretive educational signs added to the garden as each \$7500 fundraising goal is achieved: Riparian, Marsh/Wetland, Oak Savannah. Checks to CGCI can be mailed to : CGCI President's Project PO Box 251, Cotati, CA 94931-0251 (more info on the web)

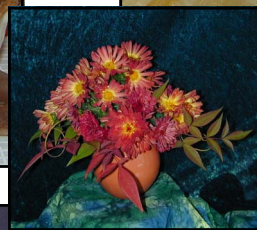
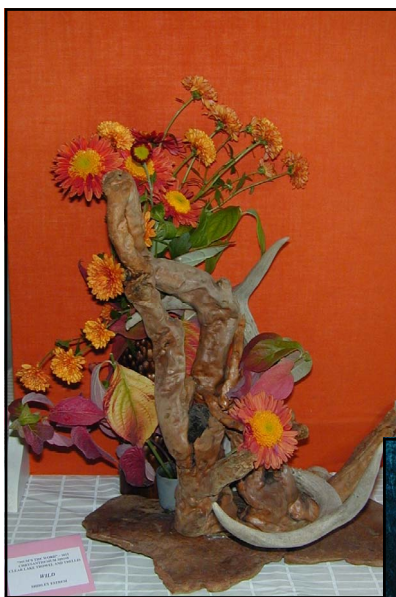


Mum's the WORD 2011









Growing Something New

by Doris Ellsworth



Think back to the joy and excitement of gardens past. Remember how it felt to select and grow a plant you've not grown before or have never even seen in bloom!

The New Year can offer an adventure like this. All we need is a decision to grow something new – to see new flowers bloom.

There was that special year upon moving up here when my sister sent a check and Pelargonium Geranium Catalog as 'welcome-to-your-new-home' gift. It was a fantastic catalog with at least 200 listings in all different categories: fancy leaf, regales, miniatures,

dwarfs, ivy, angels, stellar, etc. Much time was spent happily trying to make my selections. I got out the order form only to find the smallest order had to be 60 plants, and I was dealing with whole-sale only nurseries (I did have a resale number). I got my check book out and again made the big decision on my selections. Setting back I eagerly awaited the arrival of "custom propagated" plants. About 3 months later, UPS arrived with a box not much bigger than a shoe box. Upon opening - there were my plants laying between damp paper towels – each individually tagged, but 'NO

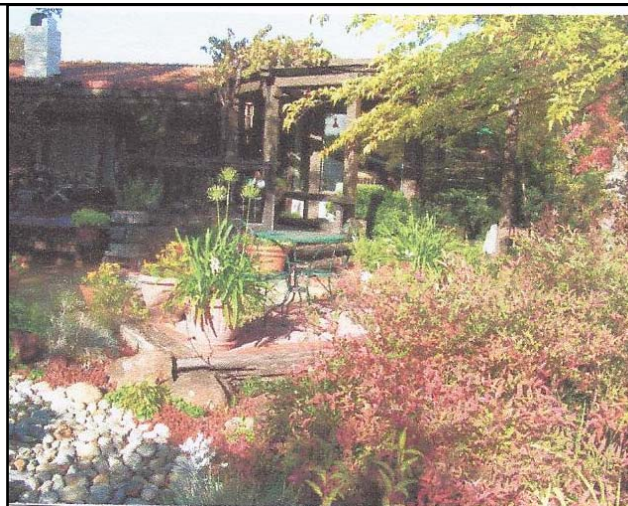


ROOTS! That's when I learned what calloused cuttings means. Luckily I had two tiered grow-lights in my kitchen and had prepared containers with special soil. What a delight to watch each grow daily and to find I didn't lose a one.

In the meantime, I took out three pickup loads of white and red rock; built a 30 foot wooden box along the front and brought in special soil. Seeing them outside growing wonderfully and then the utter joy and delight when they bloomed – each with blooms I'd never seen before!

Because of this memorable time, I have repeated this adventure with other plants / bulbs.

SPOTLIGHT-GARDEN OF THE MONTH: Jo & Jerry Shaul



In 1970, we decided to build on a portion of a 20 acre parcel that had a view of Clear Lake and Mount Konocti. The summer morning sun blasted the unprotected kitchen/family area. An arbor was added for protection and planted with wisterias (very messy) and replaced with grapes (enjoyed the fruit). The large yard area was substantially covered with a redwood deck. Better to have used a concrete slab. Water guzzling lawns were never a consideration. Walkways are a combination of stepping stones and aggregate. Railroad ties, boulders and split rail fences separate walkways from flower beds. Drought resistant perennials, shrubs and small trees are placed so as not to block the distant view.

Clear Lake Trowel & Trellis Garden Club

Return mail: Pres Helen Turley
PO Box 1903, Lakeport, CA 95453-1903

The club meets at 12:00 pm
on the 3rd Tuesday of the month.
Scott's Valley Women's Club House
2298 Hendricks Road
Lakeport, CA 95453

Garden Club Affiliates

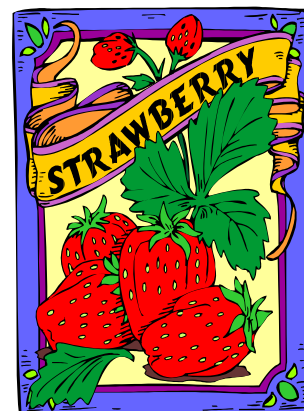
- National Garden Clubs, Inc.
(www.gardenclub.org)
National President: Shirley S Nicolai
- Pacific Region
DHinchey@alaska.com
Director: Debbie Hinchey
- California Garden Club, Inc.
(www.CaliforniaGardenClubs.org)
President: Julie West
- Mendo-Lake District Garden Club
(www.mendolakegardenclub.org)
District Director: Virginia Stranske

Award Book Deadlines:

December 1st, 2011

January 10th, 2012

See Jo Shaul or Mary Secord



Every Year a New Beginning!



Forget-me-nots

December 2011



- 30, 1-2 Christmas Wreath Workshop
- 5 *Happy Birthday Carol Kesey!*
- 5 *Happy Birthday Marva Brandt!*
- 6 10:30am (Tues) Garden Therapy-Clearlake
- 7 *Happy Birthday Gladdy Bransford!*
- 8 10:30am (Thur) Garden Therapy-Lucerne
- 13 Lake Ka-Ba-Tin Redbud Flower Arrangers
Theme: Stretch Design
10:00am (Tues), St John's Episcopal Church
- 14 *Happy Birthday Clare Grieve!*

- 15 Christmas Luncheon (Thursday)
Zino's Ristorante
6330 Soda Bay Road, Kelsleyville
12 noon

- 15 NO Regular Club Meeting
- 21 *Happy Birthday Diane Neilson!*
- 25 *Merry Christmas!*

*Deadline for newsletter articles
is the fourth Tuesday of each month.*



Happy New Year!